



# INDOFINE Chemical Company, Inc.

121 Stryker Lane, Bldg. 30, Suite 1 • Hillsborough, NJ 08844 • U.S.A.

Phone: (908) 359-6778 • FAX: (908) 359-1179

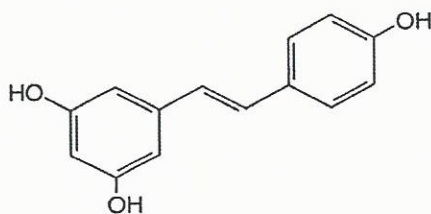
website: [www.indofinechemical.com](http://www.indofinechemical.com)

e-mail: [chemical@indofinechemical.com](mailto:chemical@indofinechemical.com)

## CERTIFICATE OF ANALYSIS

Cat. No.: 024964

<u>Product:</u>	<b>RESVERATROL</b> (trans-3,5,4'-Trihydroxystilbene)
<u>CAS Number:</u>	[501-36-0]
<u>Lot No.:</u>	0403061
<u>Molecular Formula:</u>	C <sub>14</sub> H <sub>12</sub> O <sub>3</sub>
<u>Molecular Weight:</u>	228.24
<u>Appearance:</u>	Off white powder
<u>Melting Point:</u>	253-255°C
<u>TLC:</u>	Chloroform : Methanol (9:1)
<u>Solubility:</u>	Soluble in DMSO
<u>Assay:</u>	99.92%





# INDOFINE Chemical Company, Inc.

121 Stryker Lane, Bldg. 30, Suite 1 • Hillsborough, NJ 08844 • U.S.A.

Phone: (908) 359-6778 • FAX: (908) 359-1179

website: [www.indofinechemical.com](http://www.indofinechemical.com)

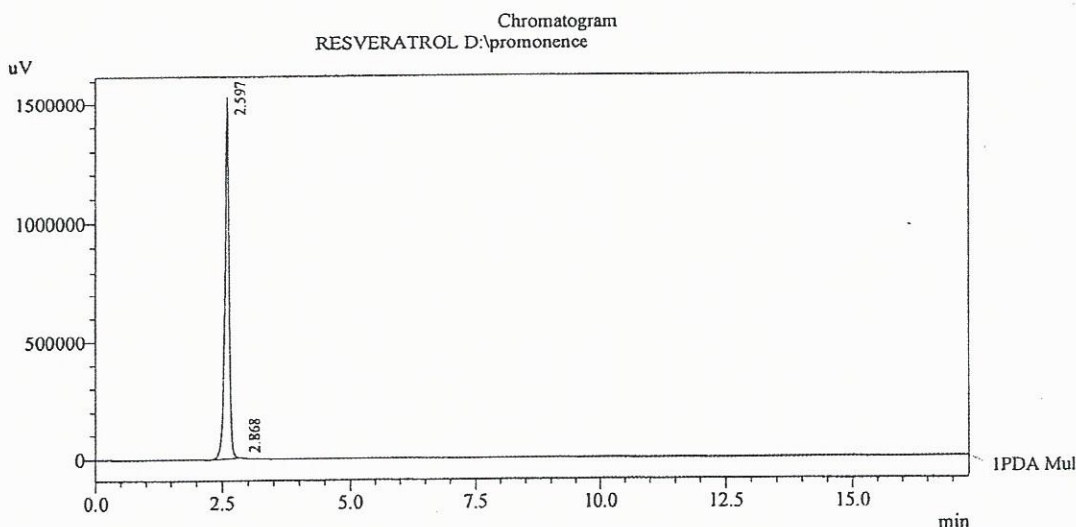
e-mail: [chemical@indofinechemical.com](mailto:chemical@indofinechemical.com)

## HPLC ANALYSIS

Acquired by : Madhuri  
Sample Name : RESVERATROL  
Sample ID : Lot No.: 0403061  
Injection Volume : 20 uL  
Data Filename : 220411C.lcd  
Method Filename : Linear Isocratic.M.lcm

Cat. No.: 024964  
Product name: Resveratrol  
Lot No.: 0403061

Description:  
Column : Phenomenex C-18, 250X4.6mm 5.0µm  
Flow : 1.000ML/min.  
Mobile Phase : A(20% of 0.05% of TFA) B( 80% of Acetonitrile)



PeakTable  
PDA Ch1 240nm 4nm

Peak#	Ret. Time	Area	Height	Area %
1	2.597	8547104	1527892	99.929
2	2.868	6070	1748	0.071
Total		8553174	1529640	100.000